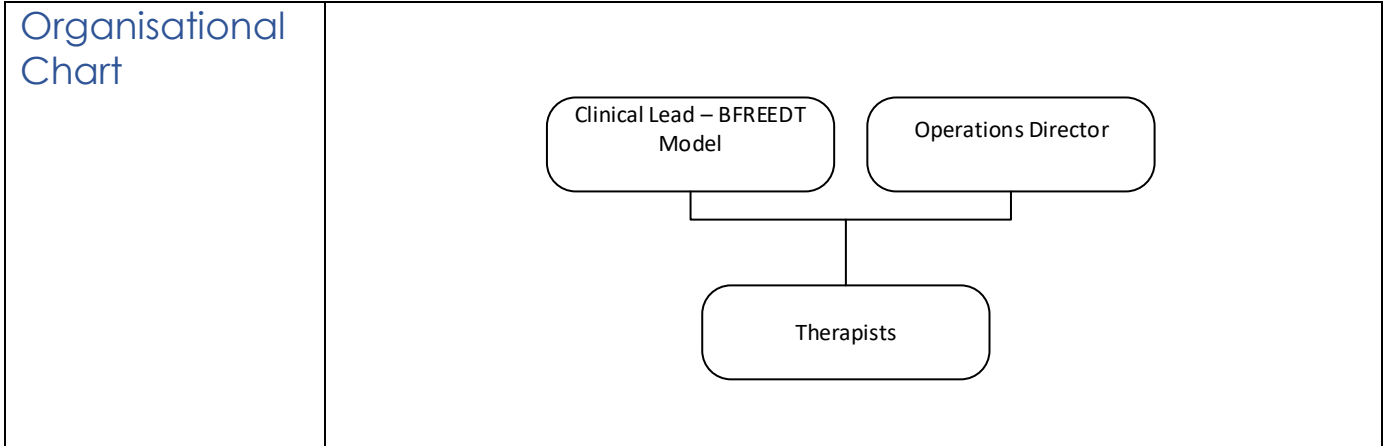


# POSITION DESCRIPTION

Role Title	Therapist
Reports to	Clinically – Clinical Lead B-Freedt Model Management – Clinical Director
Roles reporting into this role	Nil
Applicable Award	Health professionals and Support Services Employees 2020
Accountabilities and Responsibilities	<p>Therapists will use their clinical knowledge and experience to provide psychological therapy and groups for participants at Wandi Nerida. The therapy team at Wandi Nerida leads on delivering evidence-based individual, group, and family treatment as outlined in the B-FREEDT Model of Care and in line with Wandi Nerida clinical and corporate governance frameworks. The team are required to work flexibly to deliver the clinical therapy and program including some evenings, weekends, and public holidays.</p> <p><b>Clinical</b></p> <ul style="list-style-type: none"> <li>• Through advanced clinical knowledge and a high degree of independent clinical decision making, provide and oversee assessment, treatment, and co-ordination of care to participants engaged with our services.</li> <li>• Direct provision of individual, group, and family therapy and meal support to participants and their carers.</li> <li>• Participate in multidisciplinary meetings, supervision and case conferences that contribute to high quality outcomes for all participants and ensure clinical review meetings occur regularly.</li> <li>• Providing direct clinical services to people with eating disorders and families.</li> <li>• Assist with other duties as may reasonably be directed by the Team Leader or Clinical Director.</li> <li>• Involved in the day-to-day clinical risk assessment and management of participants.</li> <li>• Participate in professional development and maintain currency of professional knowledge and skills.</li> </ul> <p><b>Service delivery</b></p> <ul style="list-style-type: none"> <li>• Support the Clinical Lead as needed.</li> <li>• Provide supervision and/or consultation to other staff within the team with a focus on service quality and delivery.</li> </ul>

	<ul style="list-style-type: none"> <li>• Provide leadership in the review of current treatment programs, and development and implementation of new projects and initiatives.</li> </ul> <p><b>Service evaluation/quality</b></p> <ul style="list-style-type: none"> <li>• Maintain high standards of clinical record keeping ensuring that accurate notes are recorded, file audits completed in line with legislative requirements and organisational policies and procedures.</li> <li>• Assist the Wandjina Executive to implement and coordinate processes for quality improvement, Information Management, and adherence to Occupational Health &amp; Safety requirements.</li> <li>• Contribute to the development of papers and presentations to professional bodies, conferences, research journals and publications.</li> <li>• Ensure staff develop and maintain the required skills commensurate with their role.</li> </ul>
<p><b>Selection Criteria</b></p>	<p><b>Essential</b></p> <ul style="list-style-type: none"> <li>• Tertiary qualifications in Psychology OR other health profession i.e., Social Work/OT/Counselling, along with full registration as a health professional with AHPRA or relevant regulating body.</li> <li>• Direct experience of working with people with eating disorders and other mental health difficulties.</li> <li>• Experience in facilitating therapeutic group programs, coupled with an ability to manage difficult and challenging group dynamics.</li> <li>• Demonstrated competence in clinical problem solving, especially related to eating disorders.</li> <li>• Ability to eat in a healthy, relaxed, flexible manner in the company of participants, and to model an appropriate relationship with food.</li> <li>• A demonstrable commitment to continuous improvement of service quality, and to creating and maintaining an environment that supports clinical excellence and leads to quality outcomes.</li> <li>• Advanced computer skills including the ability to utilise ICT solutions, electronic recording systems and data management tools.</li> <li>• Ability to work both independently and collaboratively as a productive team member.</li> <li>• Clear understanding of professional boundaries, confidentiality, privacy principles and practices.</li> </ul> <p><b>Desirable</b></p> <ul style="list-style-type: none"> <li>• Advanced training in evidence-based eating disorder- specific psychotherapy models</li> <li>• Psychology Board of Australia approval to provide supervision to provisional psychologists is highly advantageous.</li> <li>• A broad understanding of the eating disorders system of care within Australia.</li> <li>• Experience in a similar not-for-profit and/or public health sector.</li> <li>• Able to fulfill all NEDC clinical competencies as per the National Practice Standards</li> </ul>



Other Requirements	<p><b>Vaccine Preventable Diseases (VPD) Requirements</b></p> <p>It is a condition of employment for this role for the employee to be, and remain, vaccinated against the following vaccine preventable diseases during their employment:</p> <ul style="list-style-type: none"> <li>• Measles</li> <li>• Mumps</li> <li>• Rubella</li> <li>• Varicella (chicken pox)</li> <li>• Pertussis (whooping cough)</li> <li>• Hepatitis B</li> <li>• Seasonal influenza</li> </ul> <p><b>We encourage applications from people with lived experience of eating disorders (recovered for at least 2 years), and family members/carers of people with eating disorders.</b></p> <p><b>At all times:</b></p> <ul style="list-style-type: none"> <li>• Relevant to the position, participate in the ongoing education, implementation, monitoring and evaluation of safety and quality initiatives relevant to The National Safety and Quality Health Services Standards and quality improvement programs</li> <li>• Conduct yourself in a professional manner.</li> <li>• Have exceptional interpersonal relationship skills and a positive attitude</li> <li>• Strive to act in accordance with the vision, mission and objectives of Wandí Nerida</li> <li>• Follow Wandí Nerida's policies and procedures.</li> <li>• Follow/participate in occupational health and safety measures.</li> <li>• Act considerately around the workplace and have regard for the well-being of fellow staff, volunteers and our service users.</li> <li>• It is a requirement of all positions at Wandí Nerida that the person has a Working With Children Check clearance (unless otherwise advised by relevant governing bodies) and Police check and complete required vaccination status to work in a Queensland Health Service.</li> <li>• All staff should be aware of and actively uphold the Wandí Nerida values.</li> <li>• We practice truth without judgement, fostering social connection.</li> </ul>
--------------------	--

Wandi Nerida acknowledges Aboriginal and Torres Strait Islander people as Australia's first people and traditional custodians.

Wandi Nerida is committed to embracing diversity and welcomes all people irrespective of body shape and size, ethnicity, faith, age, sexual orientation and gender identity. More information about our commitment to reconciliation, diversity and inclusion is available here: <https://butterfly.org.au/who-we-are/reconciliation-inclusion/>.